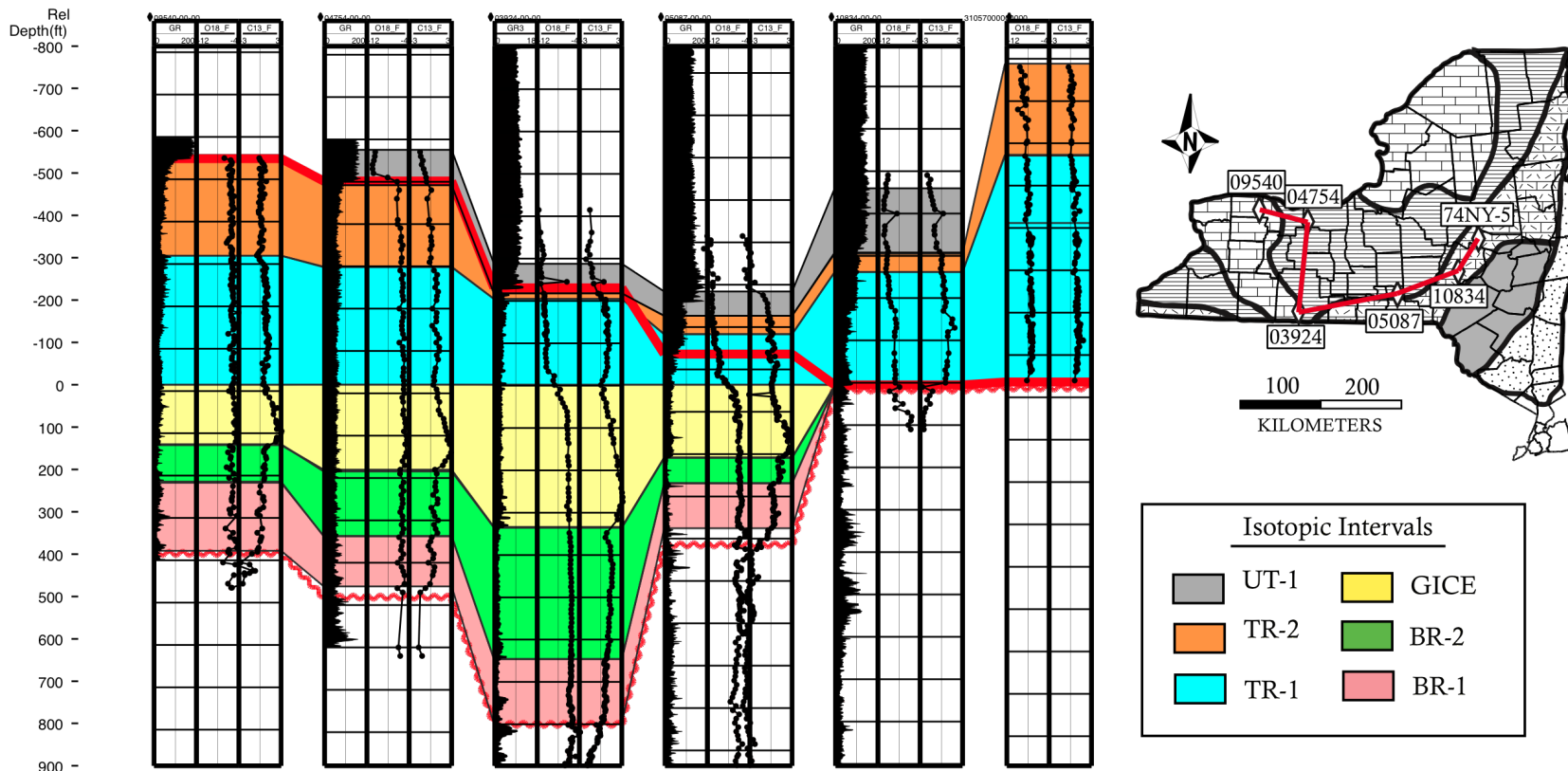


Carbon Isotope Stratigraphy

David A. Fike, Department of Earth & Planetary Sciences,
Washington University, St. Louis



We analyze the carbon isotopic composition of sedimentary strata and use the resulting signatures to correlate time-equivalent strata over large geographic distances and across varying depositional environments.



This figure shows six isotopically distinct sedimentary packages (colored intervals) that can be mapped throughout the subsurface of New York. Here we are showing results from 6 subsurface wells across New York State.