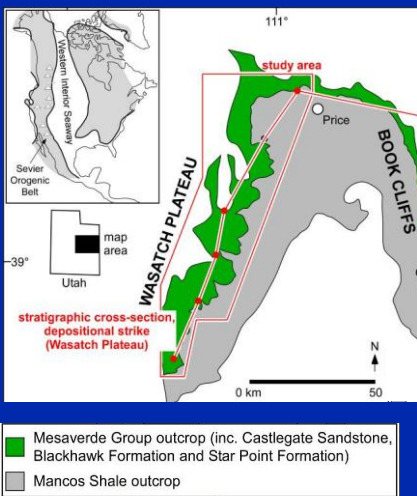


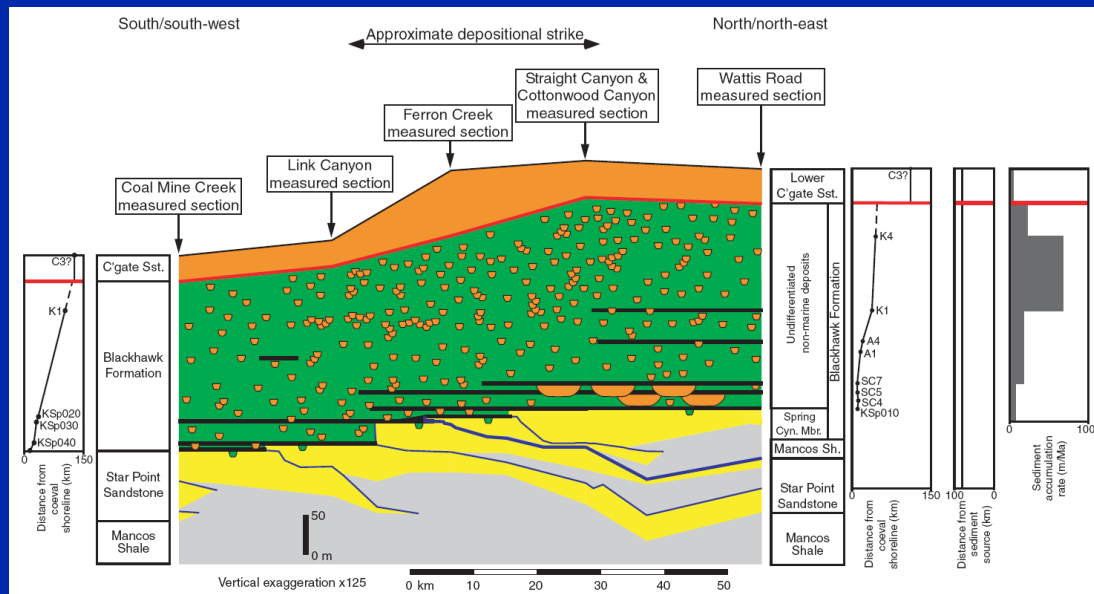
# Sequence Stratigraphic Architecture Along Depositional-Strike in Shallow-Marine and Coastal-plain Outcrops, Wasatch Plateau, Utah

- M. Royhan Gani, Dept of Earth & Environmental Sciences, University of New Orleans, New Orleans, Louisiana, USA

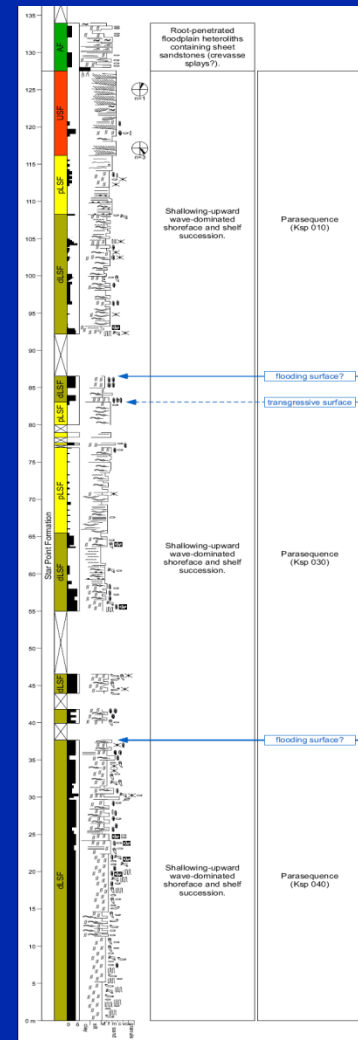
- Sequence-stratigraphic framework of ~120 km of continuous exposure of the Wasatch Plateau along depositional-strike (SSW-NNE).



Study area map



Regional cross section



Straight Canyon measured section