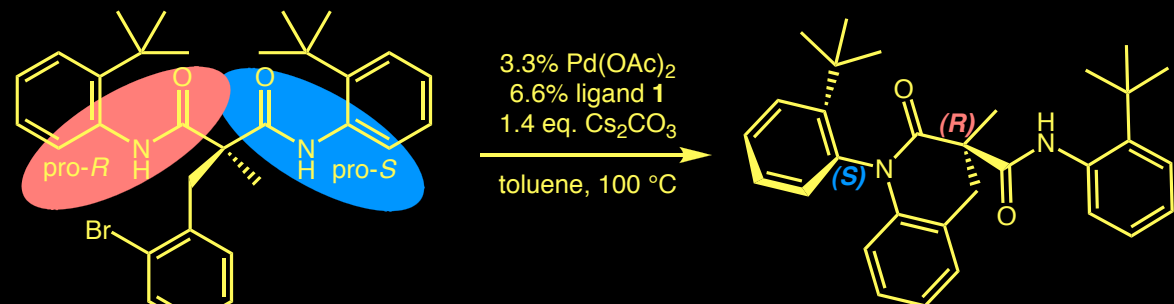


# Development of Enantioselective Nitrogen Arylation Reactions

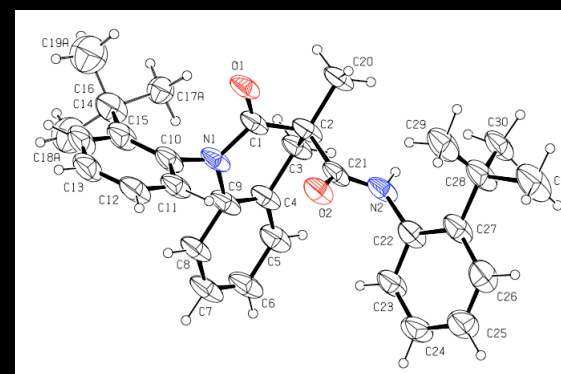
Russell D. Vuirre

Dept. of Chemistry and Biology, Ryerson University, Toronto, Ontario, Canada

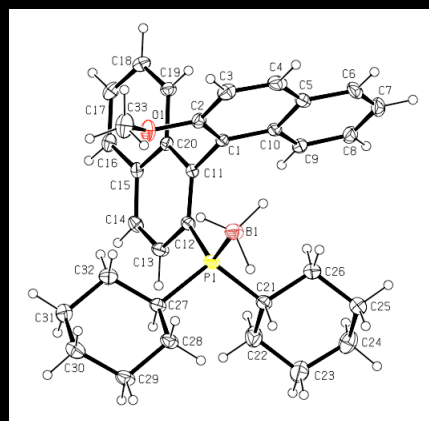
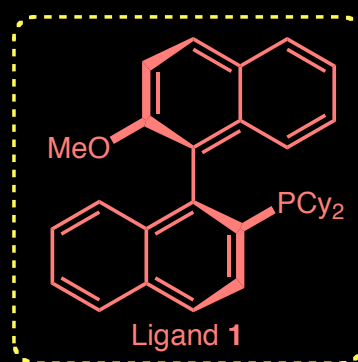


achiral, with two enantiotopic amide groups

(*R*)-chiral center and (*S*)-chiral axis isolated as single diastereomer in 99% yield and 88% enantiomeric excess



X-Ray crystal structure of cyclized product, confirming configuration of chiral center and axis



X-Ray crystal structure of borane adduct of ligand 1. This adduct is stable to air, moisture and even column chromatography