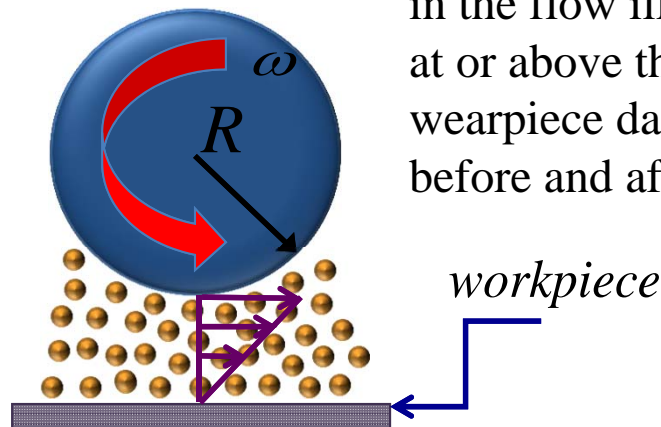
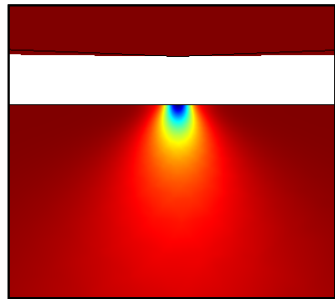
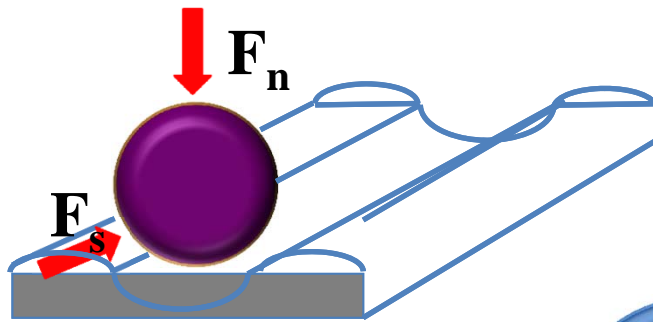


Boundary wear induced by flow of concentrated suspensions: *relating rheology and wear*

Jeffrey F. Morris

Levich Institute, City College of New York, New York, NY 10031



Analysis and experiment establish the stress level to damage a substrate. Our rheological theory predicts the normal and shear forces on a test particle in the flow illustrated; application of shear at or above the predicted threshold leads to wearpiece damage as seen below in before and after images (scale is 200 microns).

