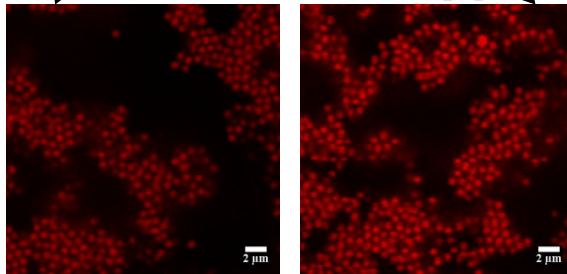
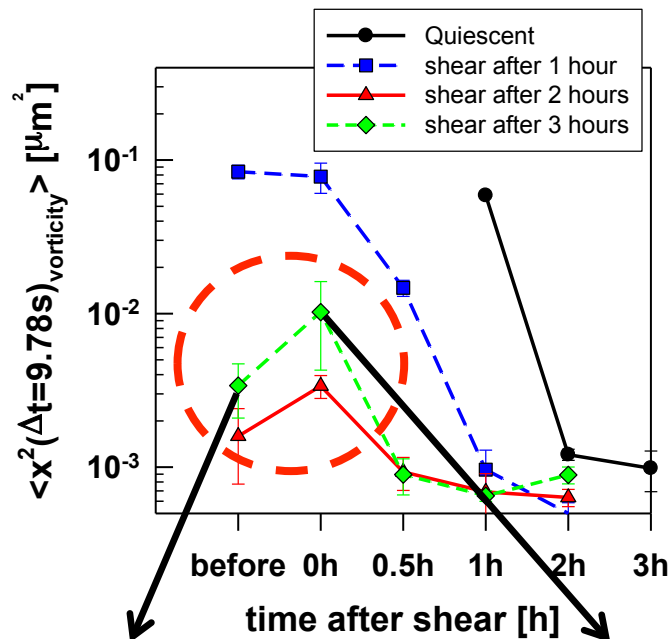


Small-angle dynamic light scattering of dilute poly(ethylene oxide) aggregates

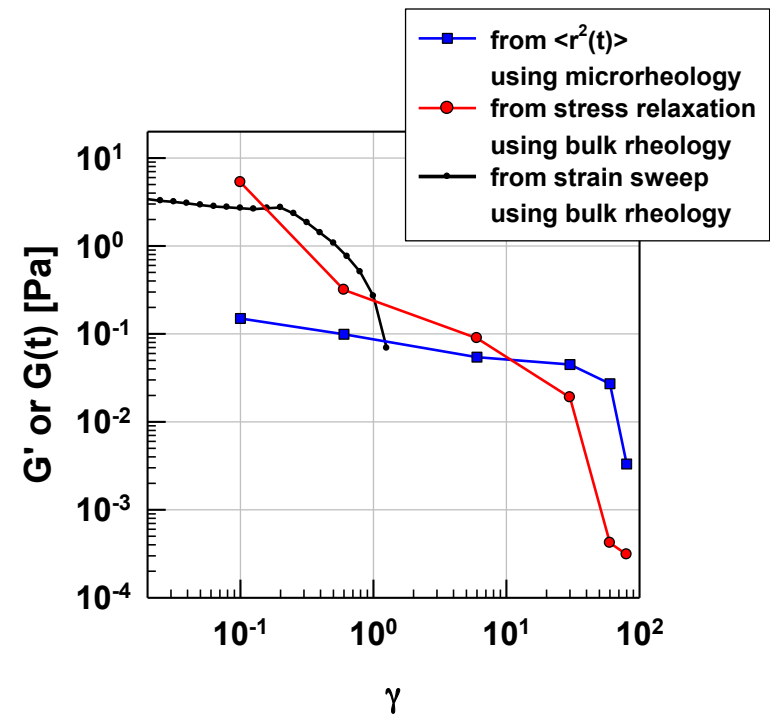
Michael J. Solomon

Department of Chemical Engineering, University of Michigan

Characterization of shear effects on slow dynamics in aggregating systems by CLSM



Relationship between single particle localization length and gel elasticity



Measurements and analysis of
Ph.D. student Heekyoung Kang