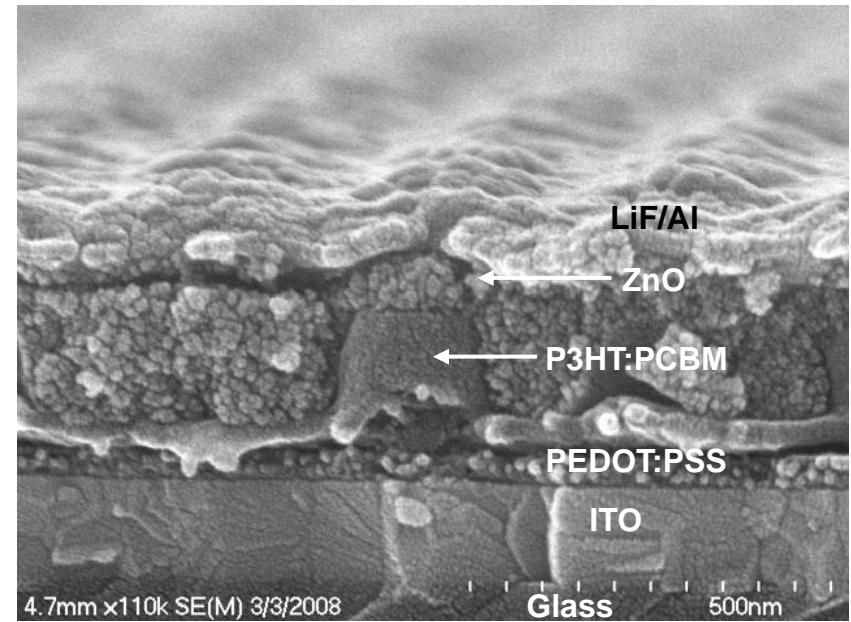


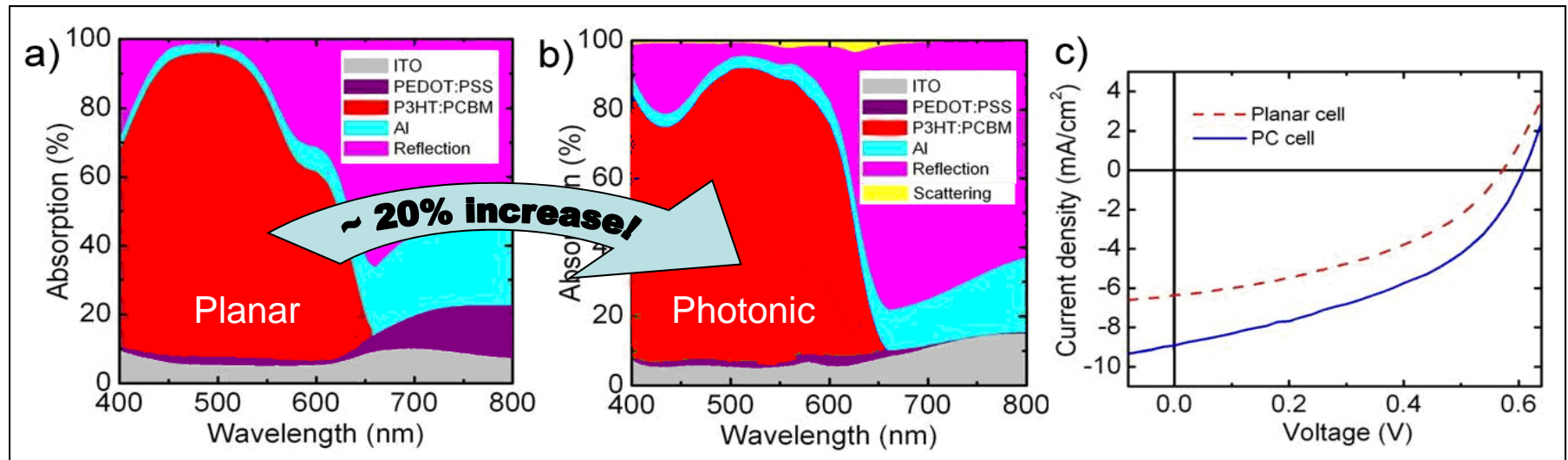
# Control of Fundamental Length Scales in Polymer Solar Cells

Rene Lopez  
UNC chapel Hill

Inspired on the butterfly wing structure, a new cell design that responds the electronic and optical characteristic lengths of the organic materials



Patterned over larger surface area, the optical absorption is boosted and its electronic performance improved



Optical redistributions at normal incidence for (a) planar and (b) PC cell for OPV-PT device. (c) Current - Voltage (J-V) properties for PC and planar cells follow absorption enhancement as predicted by the optical model.