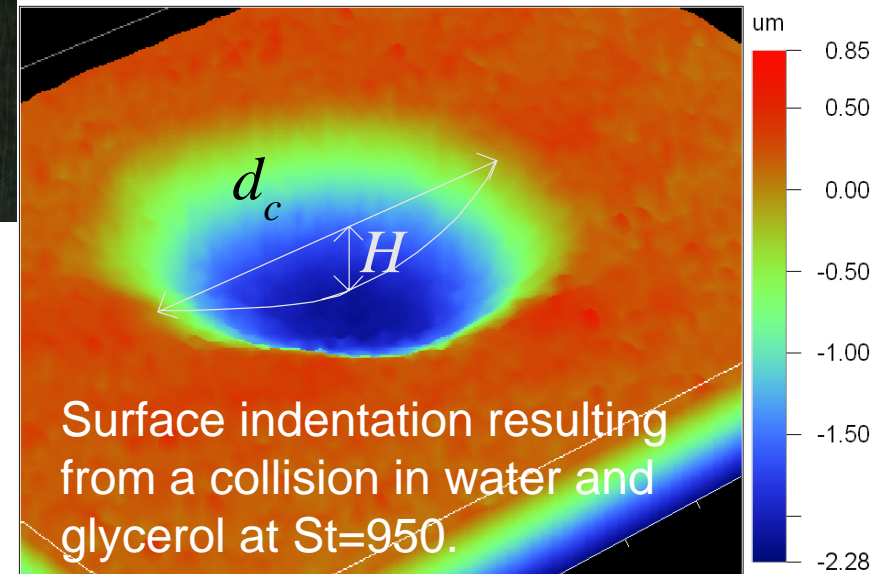


Surface Deformation in a Liquid-Solid Flow

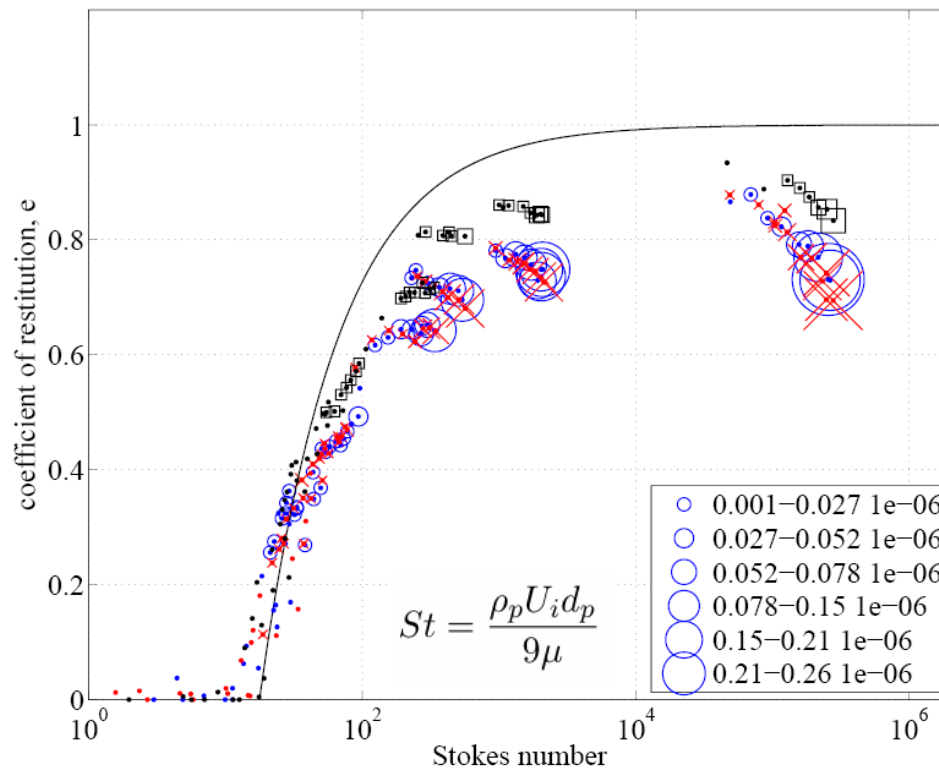
Melany L. Hunt, California Institute of Technology



Impact particles and polished aluminum surfaces



Surface indentation resulting from a collision in water and glycerol at $St=950$.



Coefficient of restitution (rebound velocity normalized by impact velocity) as a function of Stokes number, St . The symbol size show the crater depth in meters. The different colors correspond to different material properties.