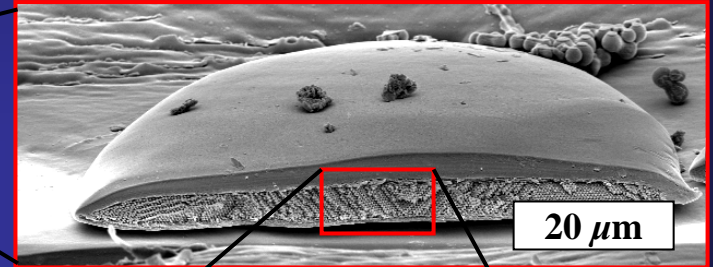
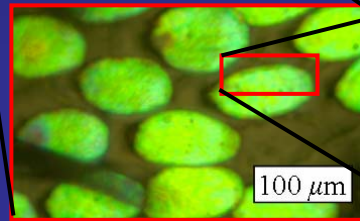
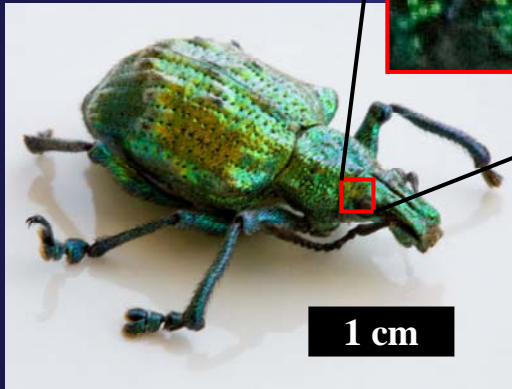


Diamond-Based Photonic Crystals Discovered in Beetle Scales

Michael H. Bartl

Department of Chemistry, University of Utah



By applying a newly developed high-resolution 3D structure evaluation method based on focused ion beam milling, SEM imaging, and theoretical modeling, we discovered a diamond-based photonic crystal structure – a structure that does not exist artificially – in beetle scales. Diamond-based structures are known as the champion photonic crystal morphologies and promise great potential for efficiency-enhanced solar energy conversion.

