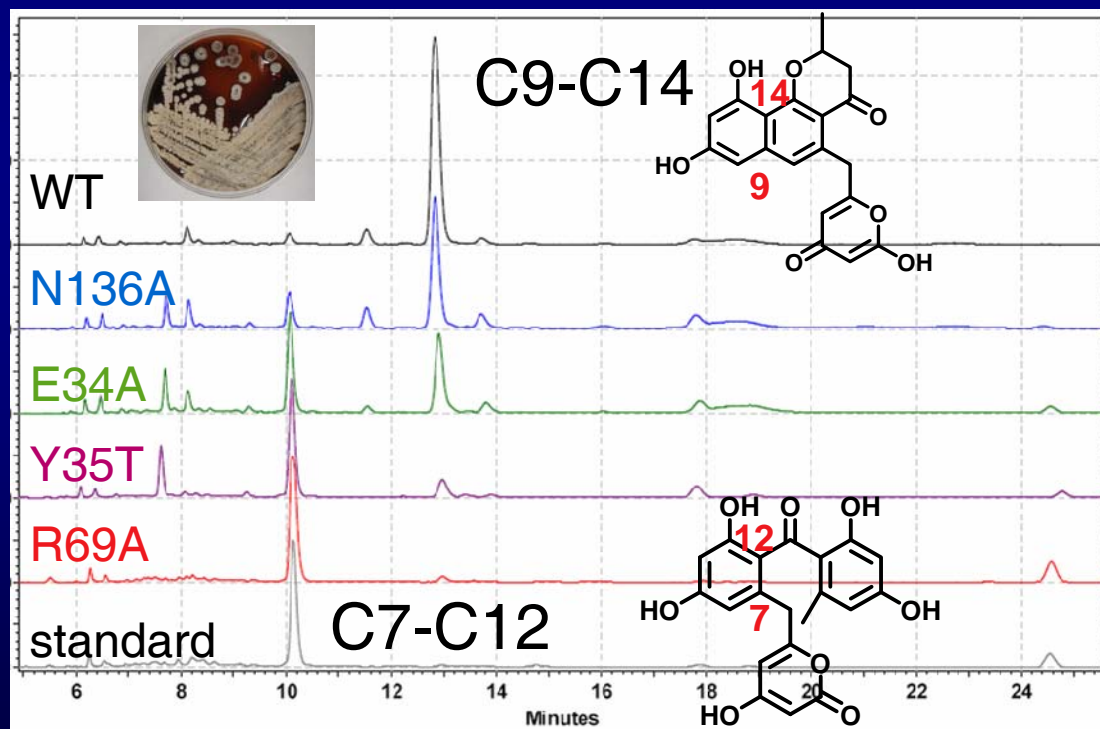
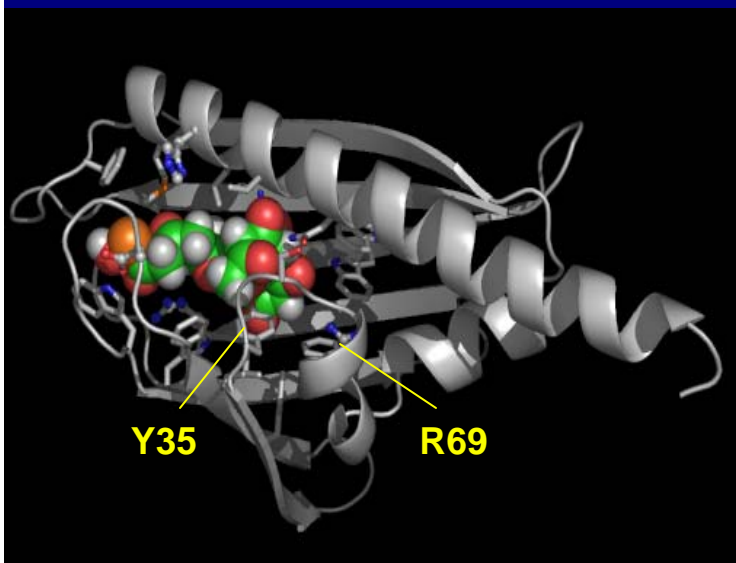
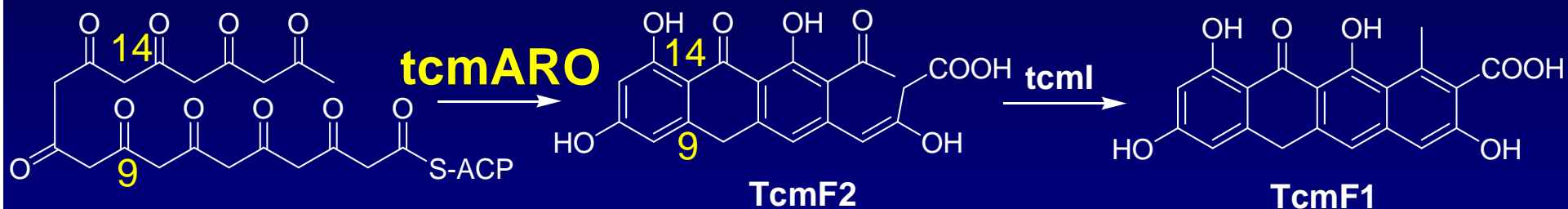


Regiospecific Synthesis of Polyketide Natural Products Using Polyketide Synthase

Shiou-chuan (Sheryl) Tsai, Department of Molecular Biology and Biochemistry,
University of California, Irvine, CA 92697-3900



Structure-based mutation changed cyclization outcome from C9-C14 to C7-C12, as well as the chain length of polyketides, for the regio-specific production of “unnatural” natural product