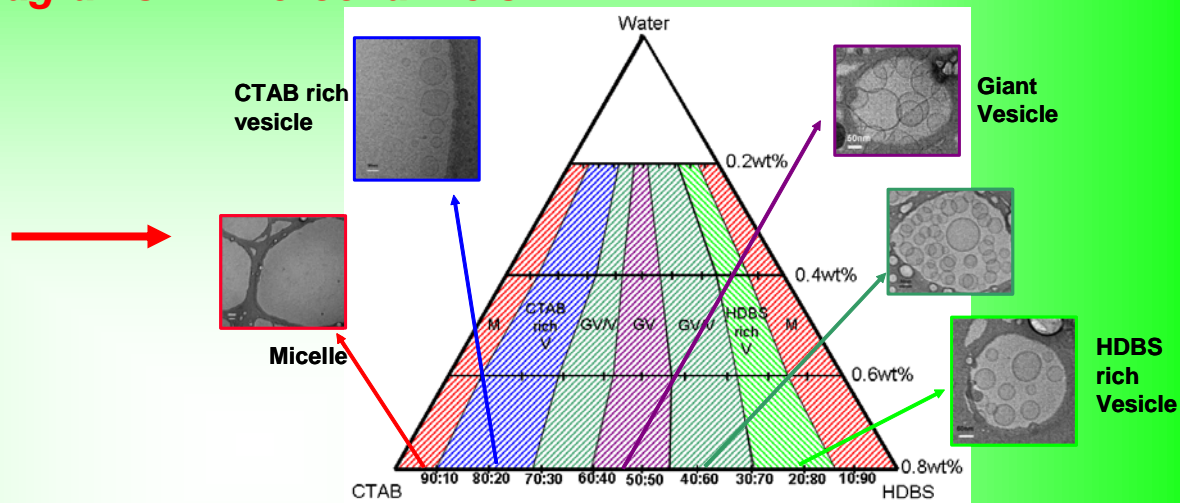
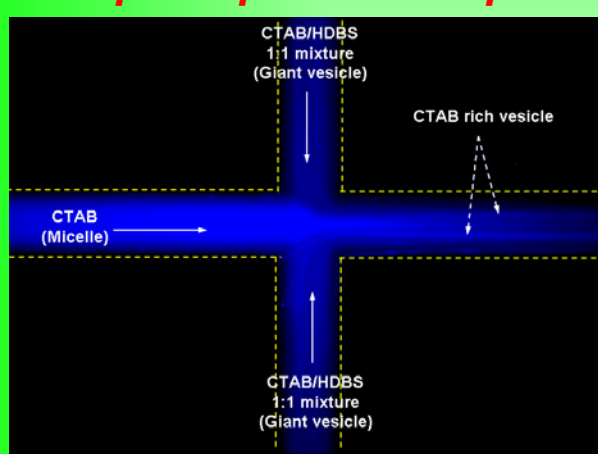


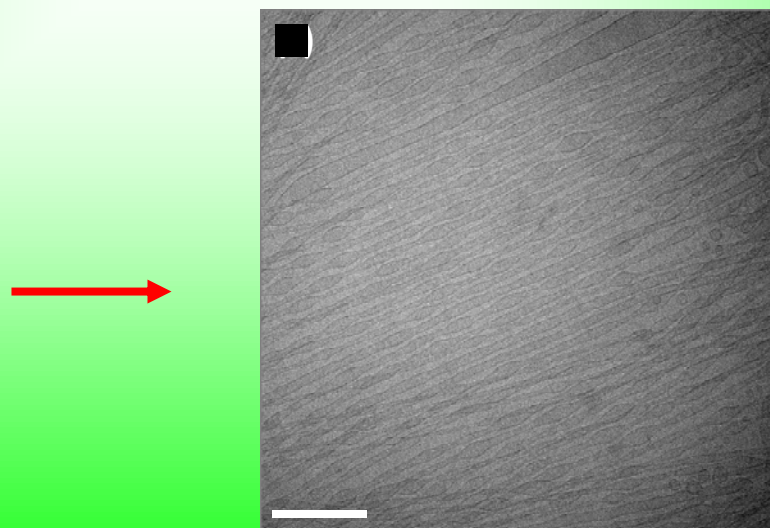
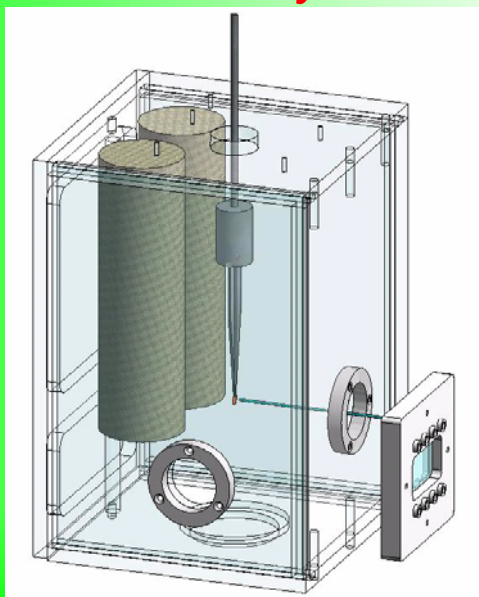
Evolution & Morphology of Surfactant Mesophases: Confinement & Rapid Exploration

Anubhav Tripathi, Division of Engineering, Brown University, Providence, RI 02912*

1. Rapid exploration of phase diagrams in microchannels:



2. Microfluidics-cryoTEM integration: Discovery of new transient structures



*Collaborator: Professor Arijit Bose, University of Rhode Island